



RECP #: 754598  
 RECORDED 6/5/2019 AT 3:37 PM BK# 2624 PG# 267  
 Debra K. Lee, CLERK OF LARAMIE COUNTY, WY PAGE 1 OF 1

# STATE OF WYOMING CORNER RECORD

(In compliance with the CORNER PERPETUATION AND FILING ACT, Wyoming Statutes, 1997 Section 33-29-140, et. seq., and the Rules and Regulations of the Board of Registrations for Professional Engineers and Professional Land Surveyors)

## SOUTH QUARTER CORNER SECTION 12, T. 17 N., R. 62 W., 6TH P.M., LARAMIE COUNTY, WYOMING

**GLO:** SANDSTONE 18 x 12 x 3 SET 10 IN DEEP MARKED 1/4 ON NORTH SIDE FOR 1/4 SEC COR.

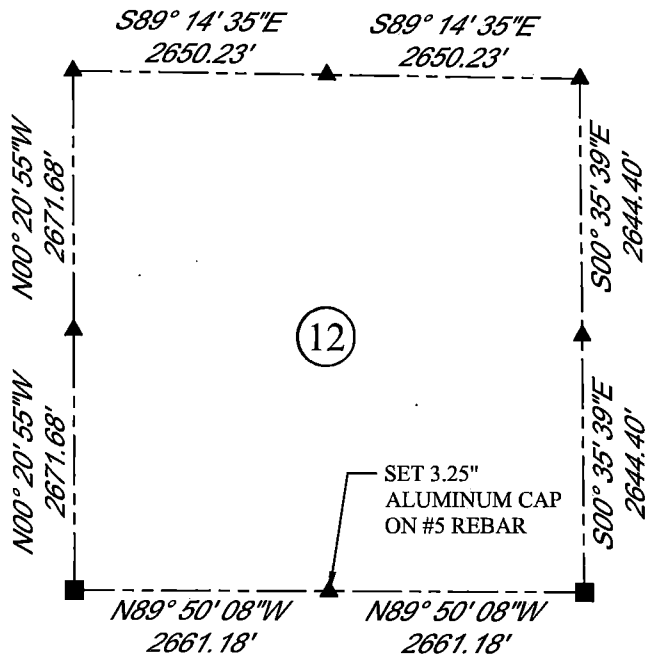
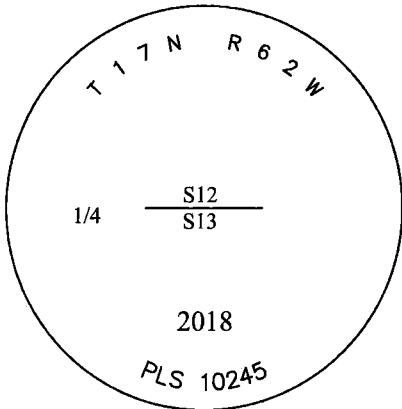
**FOUND:** NOTHING

**SET:** 3.25" ALUMINUM CAP ON #5 REBAR, 9" ABOVE SURFACE, MARKED AS SHOWN, APROX 64.3' SOUTH OF THE E. AND W. FENCE LINE, SET A FIBERGLASS ROD ON N. SIDE. POSITION RE-ESTABLISHED BY SINGLE PROPORTION.



SCALE: NONE

NORTH DETERMINED BY  
G.P.S OBSERVATIONS



**LEGEND:**

- FOUND BLM CAP
- FOUND USFS CAP
- FOUND STONE
- FOUND PRIVATE MONUMENT
- ◆ CALCULATED POSITION
- ▲ SET MONUMENT (LS10245)
- SECTION LINE

DATE OF FIELD WORK: 09/20/2018 OFFICE REFERENCE: MERIDEN

**CROSS INDEX DIAGRAM**

	1	2	3	4	5	6	7	8	9	10	11	12	13	14	15	16	17	18	19	20	21	22	23	24	25
A																									
B																									
C			6			5			4			3			2			1							
D																									
E																									
F																									
G			7			8			9			10			11			12							
H																									
J																									
K																									
L			18			17			16			15			14			13							
M																									
N																									
O																									
P			19			20			21			22			23			24							
Q																									
R																									
S																									
T			30			29			28			27			26			25							
U																									
V																									
W																									
X			31			32			33			34			35			36							
Y																									
Z																									
	1	2	3	4	5	6	7	8	9	10	11	12	13	14	15	16	17	18	19	20	21	22	23	24	25

WOOD  
 2615 AVIATION DRIVE  
 SHERIDAN, WY 82801  
 PH: 307-675-6400



THIS CORNER RECORD WAS  
 PREPARED BY ME OR UNDER  
 MY DIRECTION AND  
 SUPERVISION,  
 SEAL AND SIGNATURE

